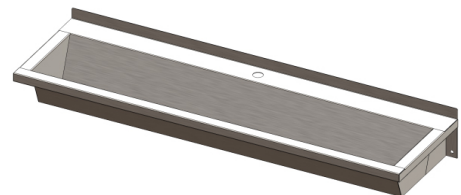
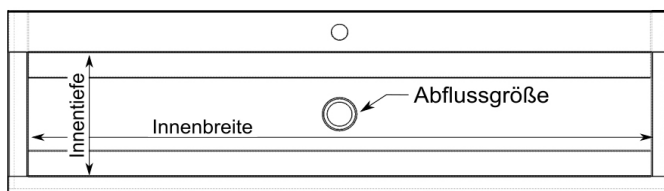
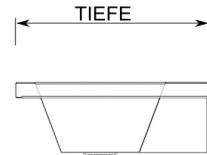


made of Stainless Steel

Tjeerdsma Edelstahl



Attention: This is an exemplary illustration. It may not match your configuration! You can request a data sheet with a detailed sketch after ordering.

Your Configuration:

Material AISI 304, material thickness 2 mm, surface brushed K240. All-round basin edge of 43 mm, wall brackets $t = 3$ mm welded with basin, drain size , basin bottom with an incline of approx. 2° .

Item number: WR-..

Technische Daten

Material:	Stainless steel
Werkstofftyp:	AISI 304
Material thickness:	1,5 mm
Total dimensions (W x D x H):	x x 0 mm
Outer basin dimensions (W x D x H):	x x mm
Inner basin dimensions (W x D x H):	-86 x -86 x mm
Drain size:	
Tap hole:	No
Basin facing:	No
Splashboard:	Nein